

PROFINET
The leading
Industrial
Ethernet
Standard



The Benefits of
PROFINET

Agenda

Uniform
structures

Performance

Integration

Innovations

Enhancement

PROFINET offers ...

... more continuity and uniform structures

... more nodes and better performance

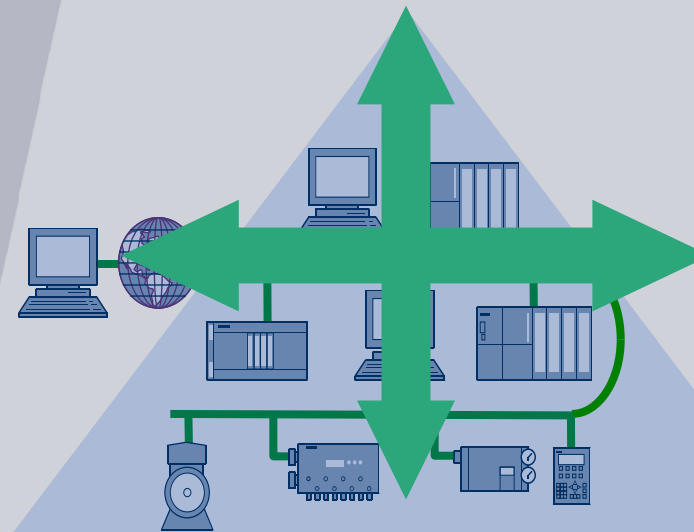
... seamless integration of existing systems

... new, innovative applications

... continuous enhancements

**PROFINET
offers ...**

**... more
continuity
(uniform
structures)**



In communication

Initial situation and requirements

4

Agenda

Uniform
structures

Performance

Integration

Innovations

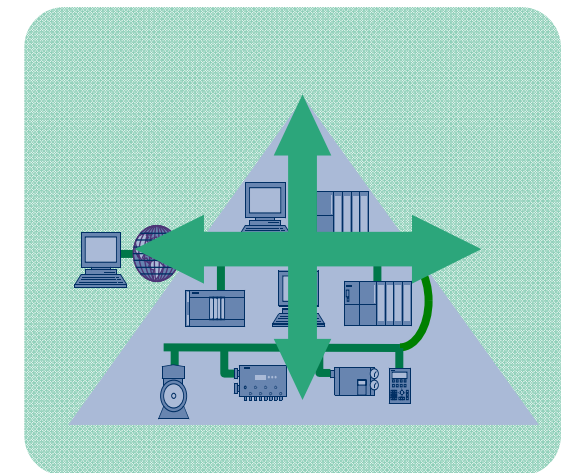
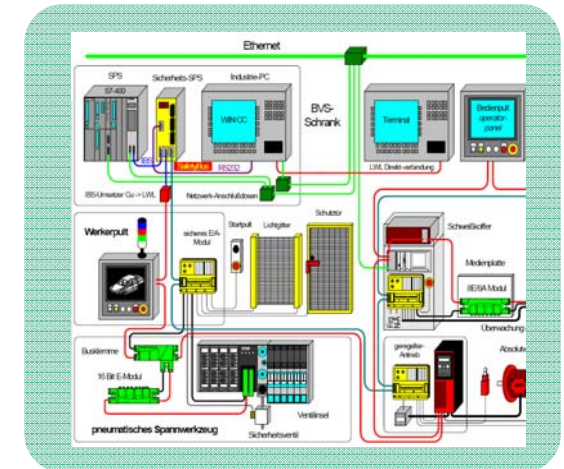
Enhancement

Does this sound familiar?

- Different networks in your office and production areas
- Several individual proprietary solutions
- Diagnostics, service and maintenance only possible on site and is long and involved

Your requirements

- Uniform, safe and secure networks without any network transitions
- Uniformity and reliability based on accepted standards
- Plant-wide, uniform engineering
- Access, service and maintenance from anywhere



Goal: To cut the cost of engineering, commissioning and live operation

PROFINET – offers the required uniformity

5

Agenda

Uniform
structures

Performance

Integration

Innovations

Enhancement

Based on ...

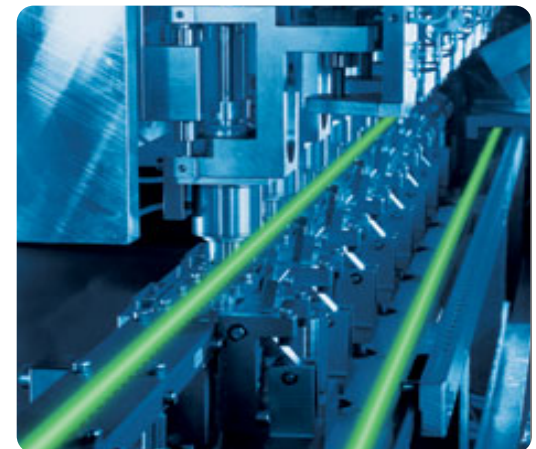
- Standard Ethernet
- Real-time communications

... and advanced architecture

- Just one bus for everything
- Flexible network topologies

results to

- Unlimited IT communications parallel to real-time communications
- Easy use and integration of standard Ethernet applications
- Web functionalities in automation components
- Security even in your industrial environment



PROFINET is Standard Ethernet

6

Agenda

Uniform
structures

Performance

Integration

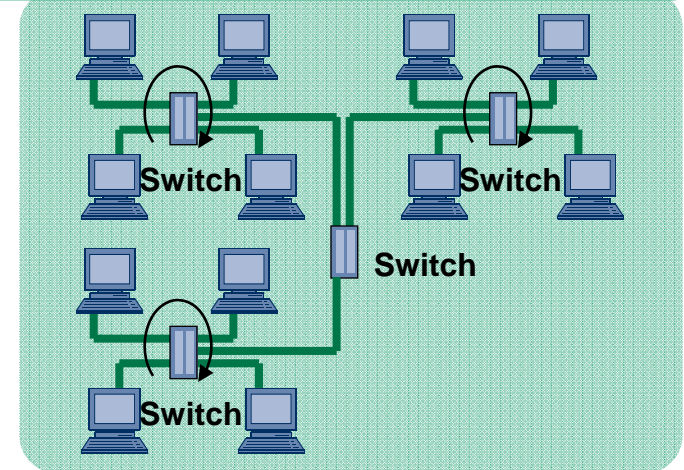
Innovations

Enhancement

Switching technology

- Simultaneous sending/receiving
- Parallel communications paths
- Unlimited number of devices
- Ultra short response times
- 1,440 bytes per frame
- Intelligent Network device

Parallel communications



PROFINET – innovative and future-proof

PROFINET is Real-time Ethernet

7

Agenda

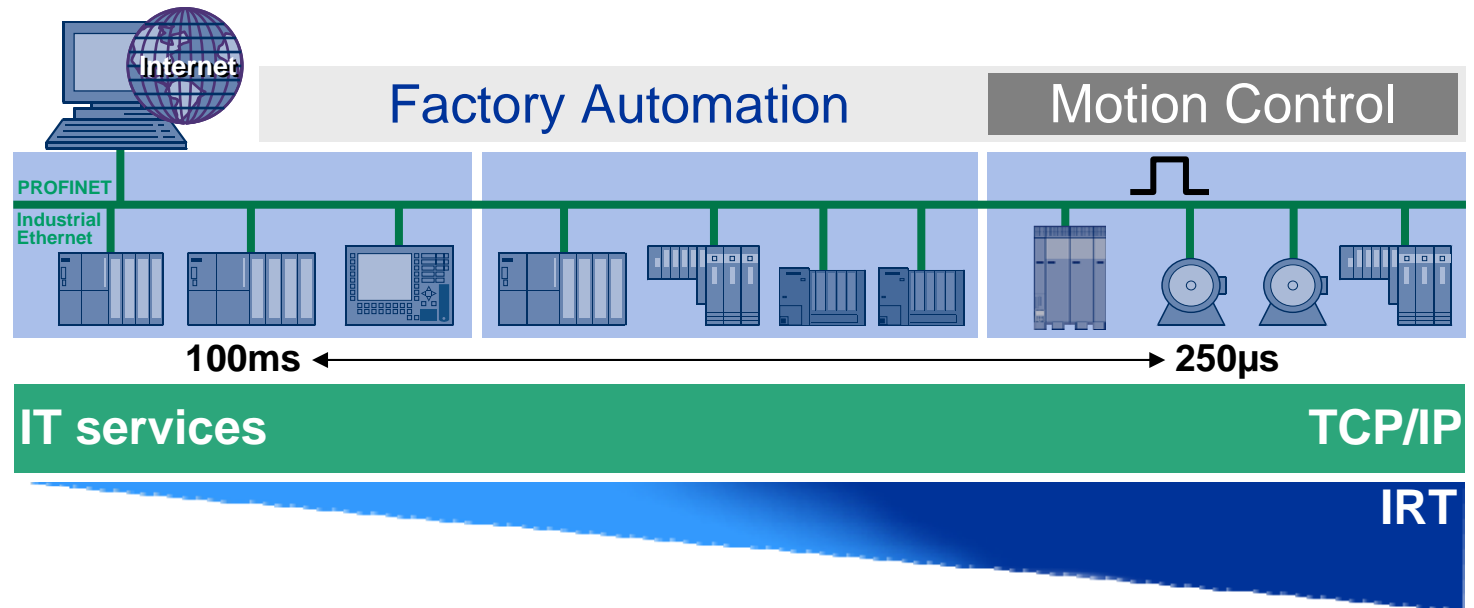
Uniform
structures

Performance

Integration

Innovations

Enhancement



Enables all this...

- ... direct online access to field devices
- ... maintenance and service from anywhere (even remote)
- ... lower costs for production/quality data monitoring

**Scalable Real-time for simultaneous,
unlimited IT communications**

Agenda

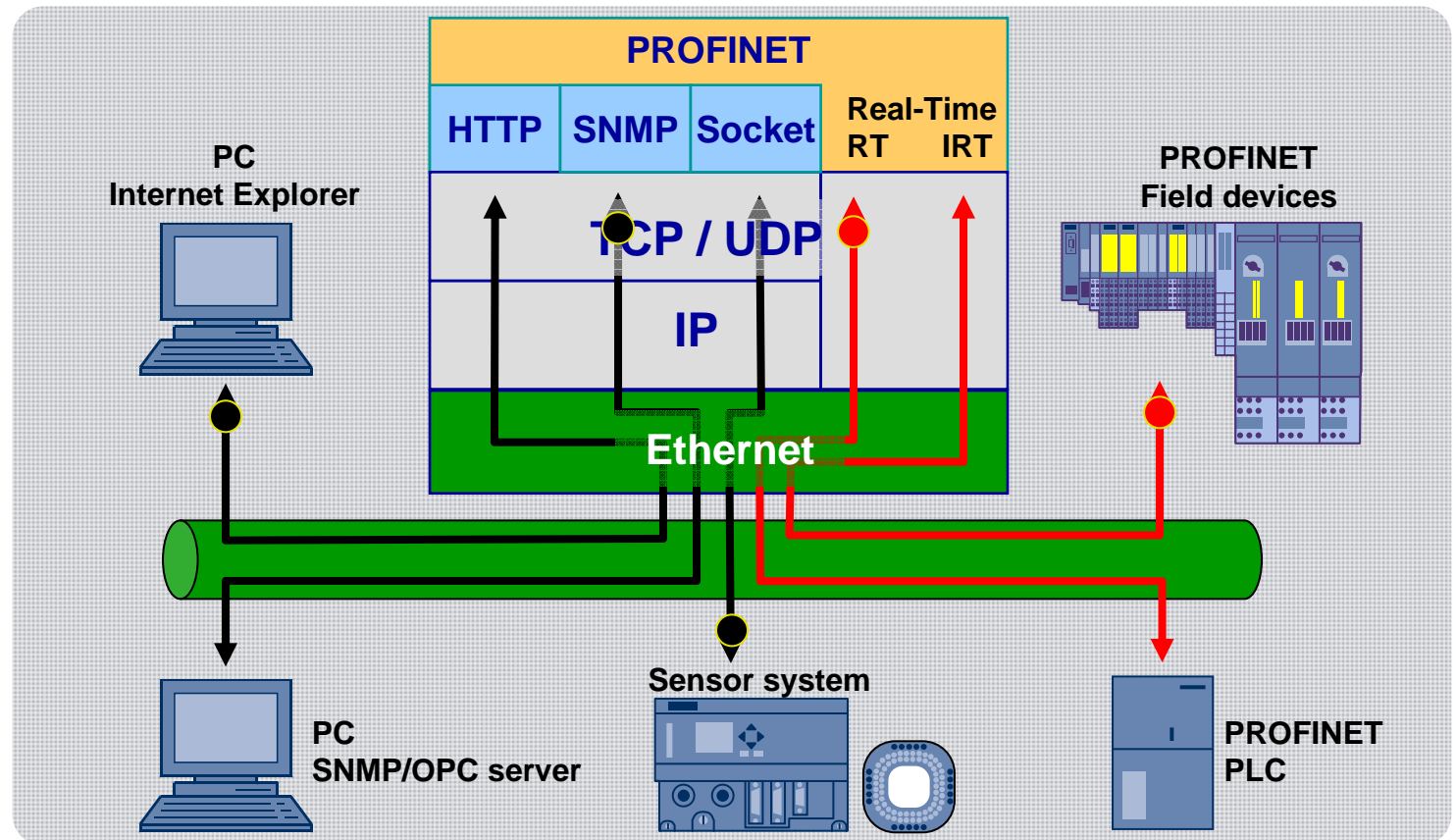
Uniform
structures

Performance

Integration

Innovations

Enhancement



PROFINET features standard TCP/IP communications in compliance with IEEE 802.3 and real-time communications

Agenda

Uniform
structures

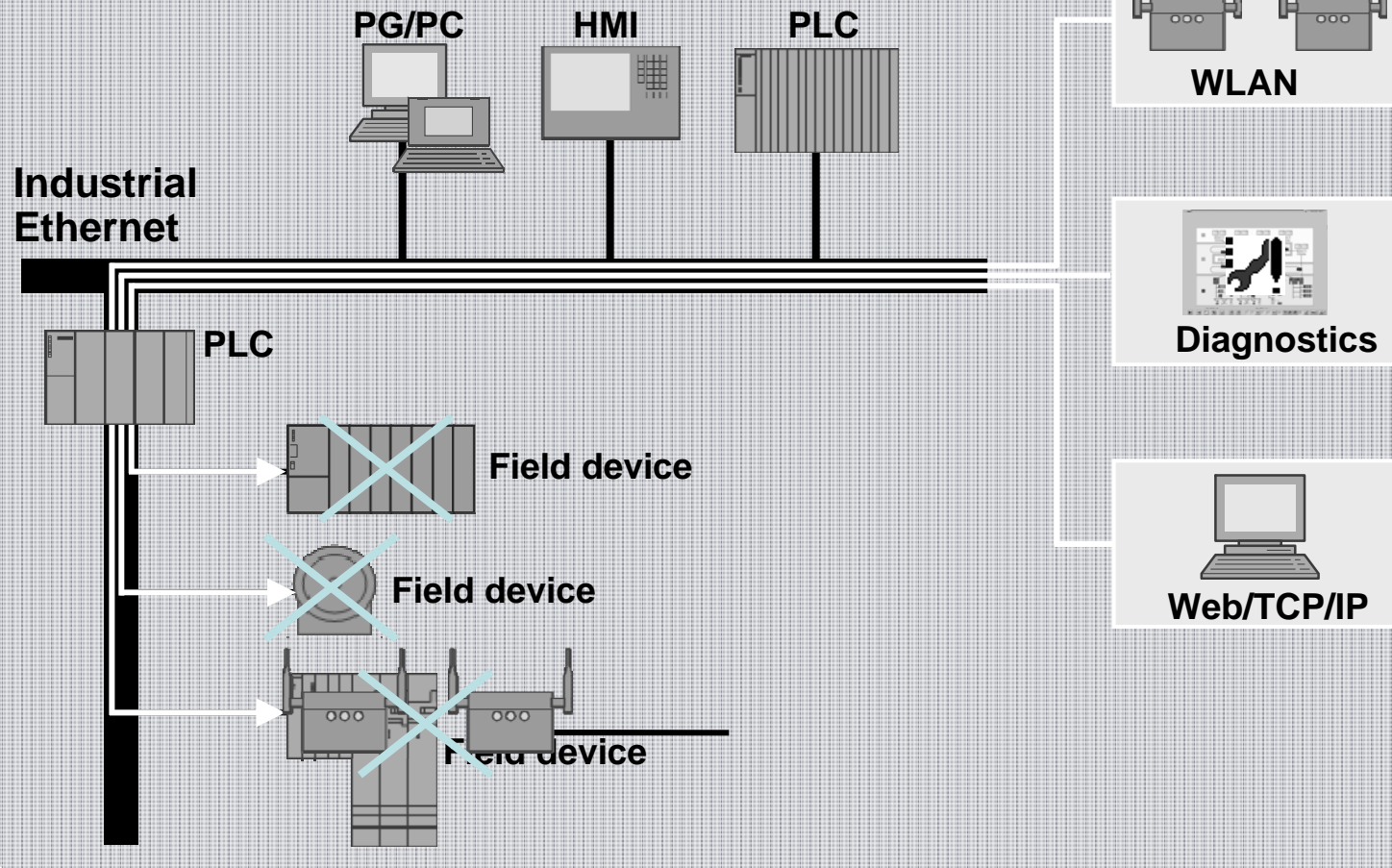
Performance

Integration

Innovations

Enhancement

Conventional automation topologies with fieldbuses such as EtherCAT, Ethernet Powerlink, PROFIBUS, Interbus and other



PROFINET – use one bus for all your tasks!

10

Agenda

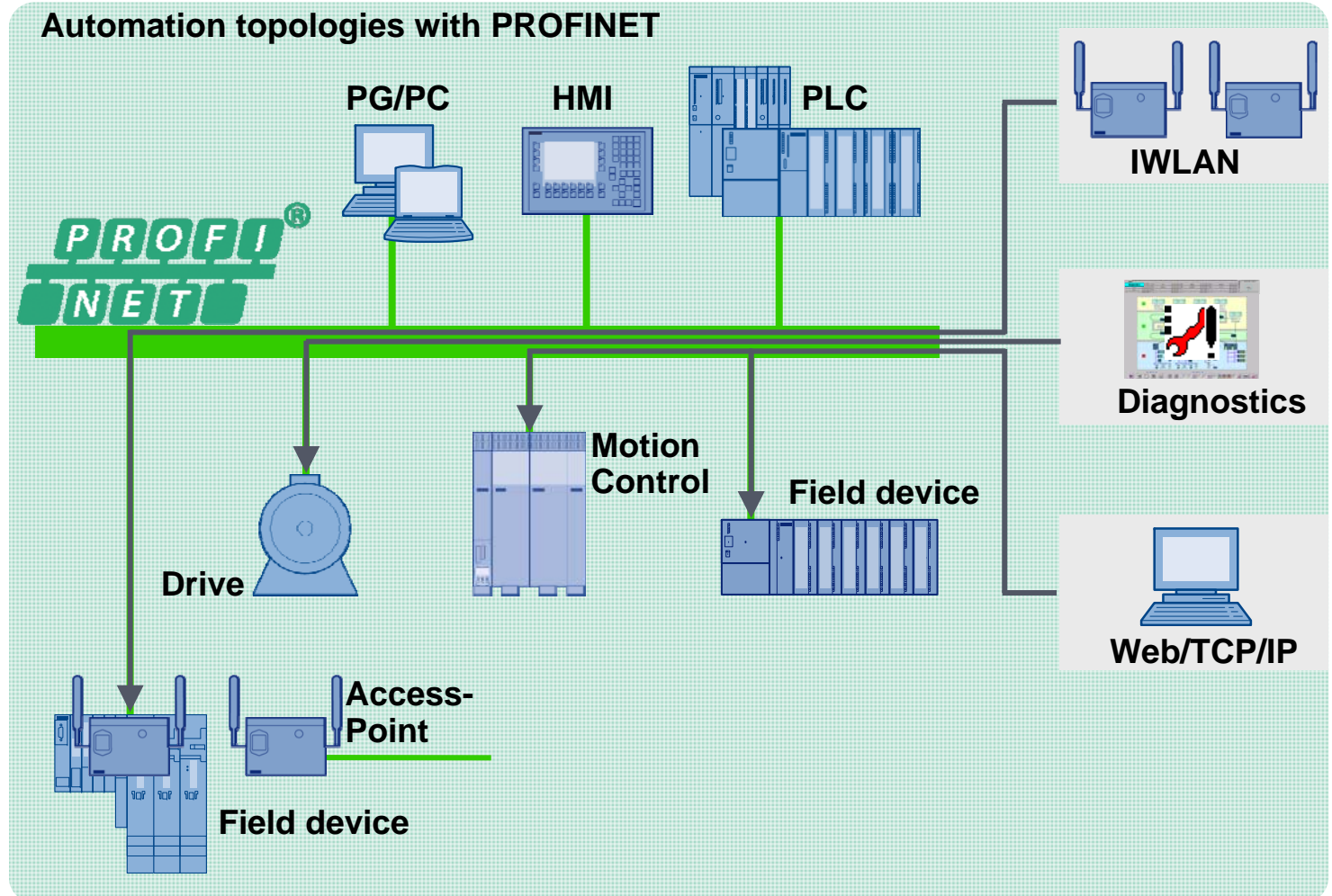
Uniform
structures

Performance

Integration

Innovations

Enhancement



Agenda

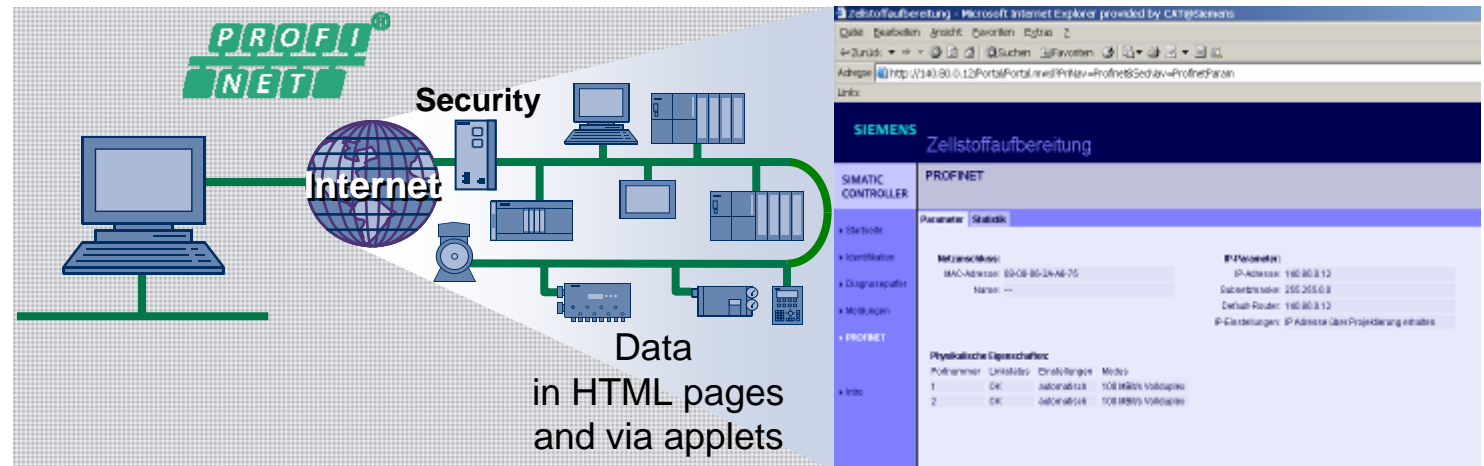
Uniform
structures

Performance

Integration

Innovations

Enhancement



Access to the automation from anywhere in the world

- Via the integrated web server in automation devices
- With a standard Internet browser
- Regardless of your engineering tool
- Easy remote diagnosis and services

Event-driven message dispatched by SMS or e-mail

PROFINET - innovative communications via TCP/IP and the Internet for automation applications, too!

Agenda

Uniform
structures

Performance

Integration

Innovations

Enhancement

Offers protection from

- Address errors and improper operation
- Unauthorized access
- Manipulation and espionage

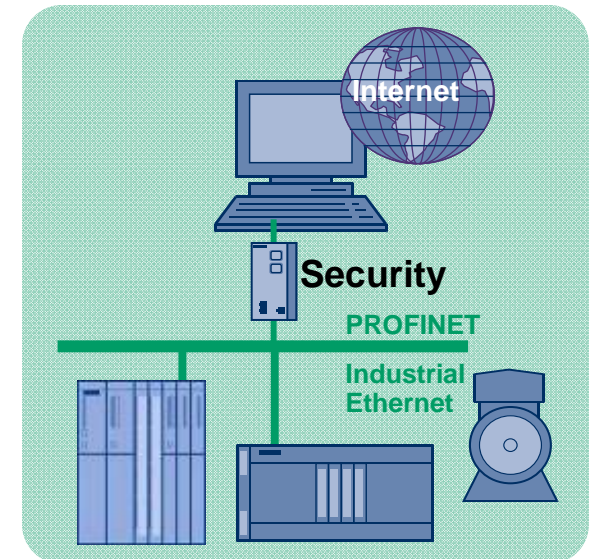
Features

- Scalability and reaction-free installation
- Only basic IT knowledge required
- Proven and certified security standards (firewall, VPN)

Enables

- Use of Ethernet at all levels of automation
- Vertical networking
- Increased use of open IT standards in automation

**Boost security and performance
in your production processes!**



Agenda

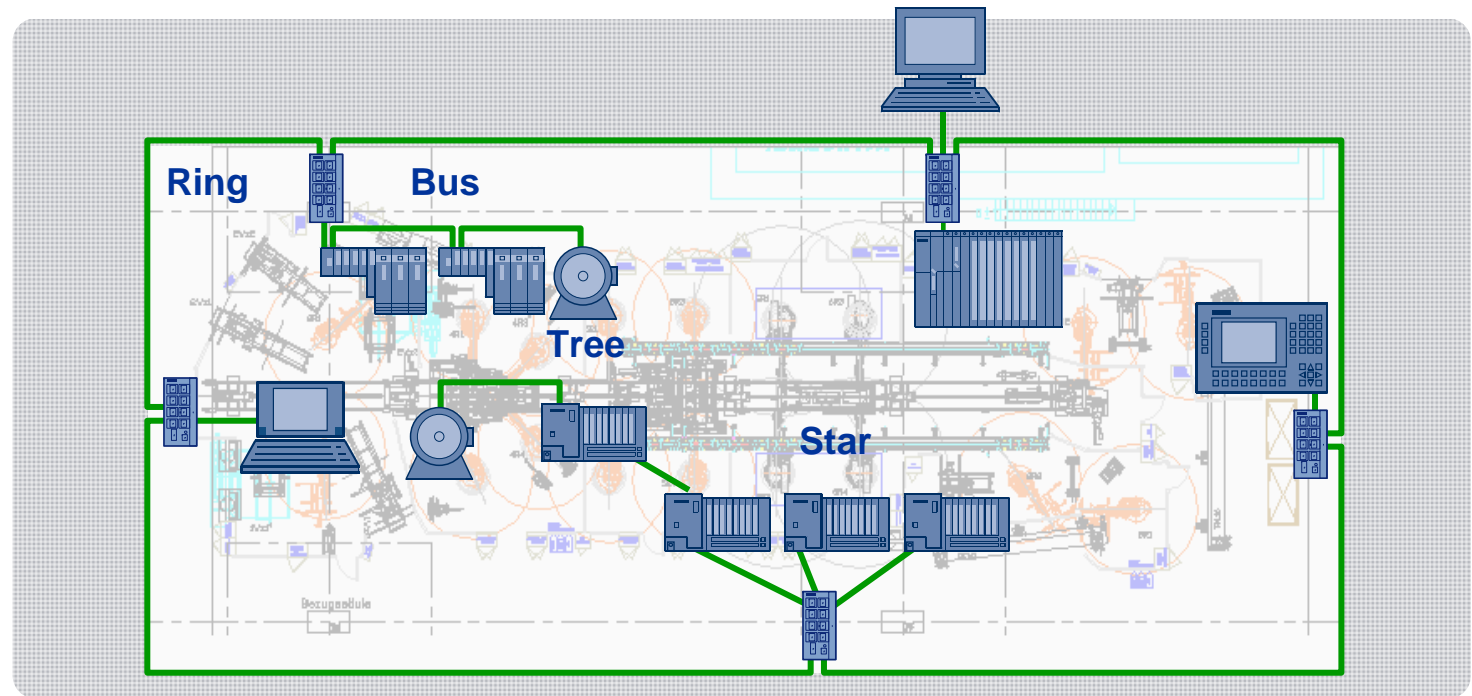
Uniform
structures

Performance

Integration

Innovations

Enhancement



Benefits and added value for our customers

- Bus structure through integration of switch ports in devices
- Tree and star topologies for tree'd configurations
- Redundant rings with reconfiguration in real time

**Cost reduction and
more flexibility**

High availability

Agenda

Uniform
structures

Performance

Integration

Innovations

Enhancement

More uniformity in communications

Building automation



Mineral water – filling & transport



Warehouse logistics



Industrial bakery



Power management in in paper recycling



Sprinkler control



Agenda

Uniform
structures

Performance

Integration

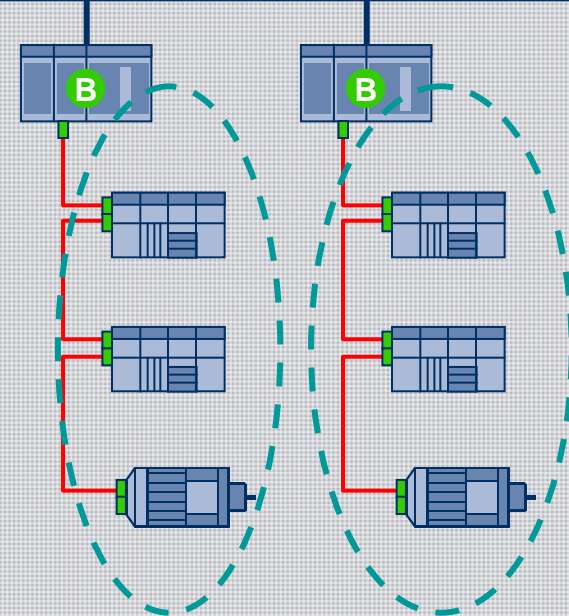
Innovations

Enhancement

Competitor situation

- Real-time network is separated from the rest by a controller
- When field devices are connected (such as drives) within a real-time domain, their asynchronous communication inhibits network and CPU performance considerably.
- HMI, other controllers, vision systems, wireless segments, and standard PCs are outside the real-domain, since they adversely affect real-time behavior.
- This is “just” a new fieldbus on Ethernet

Non-real-time domain e.g. Ethernet



Real-time domains,
e.g. EtherCAT, Ethernet Powerlink

PROFINET provides complete flexibility and a real quantum leap since real time and TCP/IP, standard and safety are running over one cable or wireless!

PROFINET – use one bus for all your tasks!!

16

Agenda

Uniform
structures

Performance

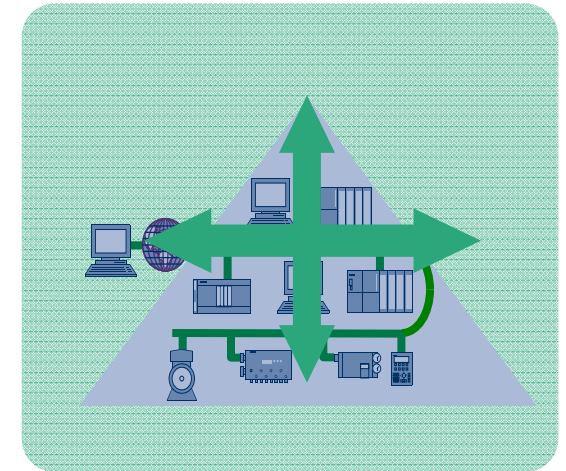
Integration

Innovations

Enhancement

Benefits and added value for customers

- Connect any automation device to any point
- All automation applications run via just one cable; Real-time and TCP/IP
- Standard and failsafe automation via one cable – or even wireless



Summary

Flexibility and cost reduction for engineering, installation and maintenance

Configuration – like PROFIBUS

17

Agenda

- Uniform structures
- Performance
- Integration
- Innovations
- Enhancement

ABB Configurator

File Edit View Project Tools Window Help

Devices

Read PROFINET

Selected PROFINET IO Controller

Name: ilc-370-pn3.quickstart.de IP Address: 192.168.0.2

Device Type: ILC 370 PN 2TX1B Subnet Mask: 255.255.255.0

Default Gateway:

Available on Network:

Name	Type	MAC Address	IP Address	Subnet Mask
ilc-dio6	IO-Dev.: ILB PN 24 DI16 DIO16-2TX	00:A0:45:04:04:34	0.0.0.0	0.0.0.0
ilc-switchcs-16x5	IO-Dev.: FL SWITCH MCS 16TX	00:A0:45:02:9D:21	192.168.0.6	255.255.255.0
ilc-bk4	IO-Dev.: FL IL 24 BK PN PAC	00:A0:45:05:2A:3F	0.0.0.0	0.0.0.0
ilc-pn-bis3	IO-Dev.: FL PN/BS	00:A0:45:05:09:34	0.0.0.0	0.0.0.0

Filter: ☐ unnamed ☐ not in Project

Flashing On Insert Refresh

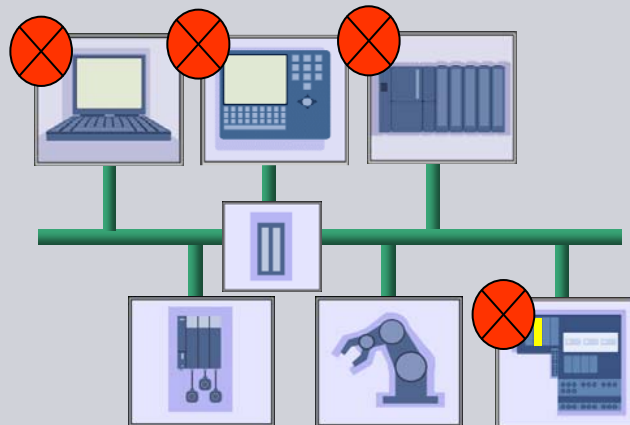
4 PROFINET devices reachable on the network!

Help Close

Copy
Cut
Delete
Paste
Plug Device...
Add Device...
Update Device...
Insert Device...

**PROFINET
offers ...**

**... more
continuity
(uniform
structures)**



For diagnosis

Agenda

Uniform
structures

Performance

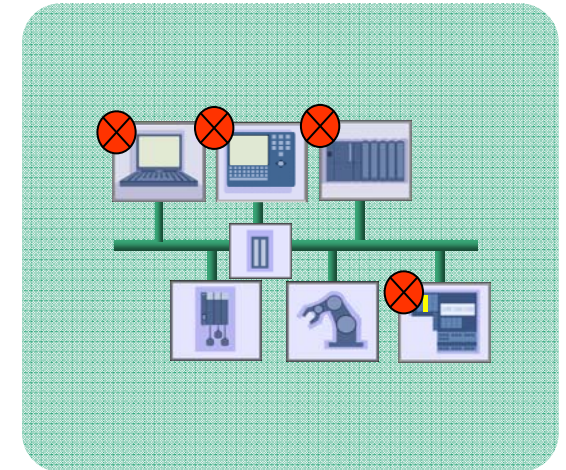
Integration

Innovations

Enhancement

You want...

- Access to your data from anywhere
- To localize faults quickly
- Fault messages in plain text and foreign languages
- Comprehensive diagnostics down to the channel, even across gateways
- To use common IT standards
- A graphical overview of the real topology
- Preventative diagnostics and maintenance



**Goal: Fast commissioning and increase in
plant availability**

Agenda

Uniform structures

Performance

Integration

Innovations

Enhancement

Beside

- Proven channel diagnosis known from field busses
- Guaranteed alarm

... usage of standard Ethernet diagnosis

- Established mechanism like SNMP
- Access anywhere

on top

- Easy localization with topology views
- Simple access with web

Agenda

Uniform
structures

Performance

Integration

Innovations

Enhancement

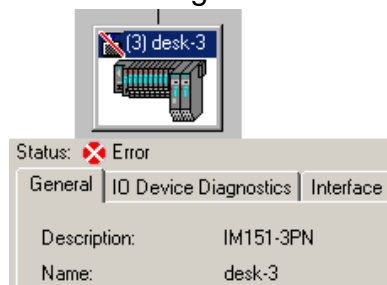
Comprehensible names of devices

- well defined names for the addressing are also used for diagnostic information, e. g. „desk-3“

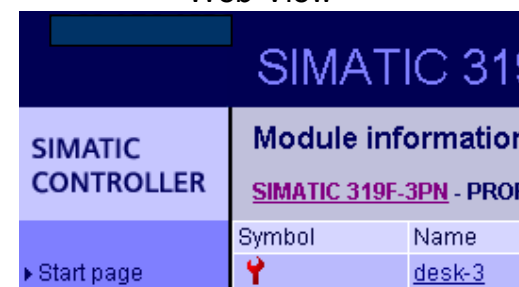
Offline-Engineering



Online-Diagnostics



Web-View



Consequent support also of the connectors/wiring naming

Offline-Engineering

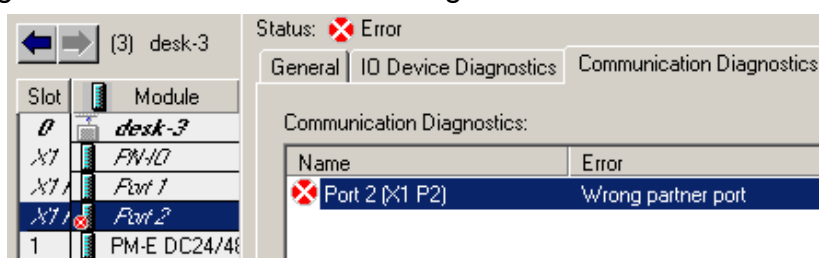
Slot	M..	Order number
0	desk	6ES7 151-3BA2
X1	FN-IO	
X1	Port 1	
X1	Port 2	

Device-Housing



X1 P2

Online-Diagnostics



Error prevention

Clear identification of the fault location

Fast repair

Agenda

Uniform
structures

Performance

Integration

Innovations

Enhancement

Diagnostic overview

In levels of detail

- Device
- Modul
- Channel
- Interrupts

Current fault events

Acknowledged

I&M (Identification & Maintenance)

Module Information - IM151-3PN

Path: CBA\PN#02\PN#02-IM151-8 PN/DP CPU Operating mode of the CPU: RUN
Status: Error

Network Connection		Statistics		Identification	
General	IO Device Diagnostics	Communication Diagnostics	Interface		
IO controller device number: 0		Manufacturer's ID: SIEMENS AG		Device ID: 16# 0301	
				Hex. Format...	
Standard diagnostics:					
Module missing in slot: 3					
Channel-specific diagnostics:					
Slot	Channel	Error			

Date/time arrived	ID	Message text	Status
01/13/2009 03:47:30.354 PM	76	PN device 1 on PN system 100 Slot: 3: Module removed Name: PN#02-IM151-3PN Module: 4DI DC24V HF I/O address: I3	I
01/13/2009 03:46:07.480 PM	75		
01/13/2009 10:38:55.512 AM	75		

Module: CBA
Source: RSE

Module Information - IM151-3PN

Path: CBA\PN#02\PN#02-IM151-8 PN/DP CPU Operating mode of the CPU: RUN
Status: OK

Network Connection		Statistics		Identification	
General	IO Device Diagnostics	Communication Diagnostics	Interface		
Module information					
PLC name: ---		Module name: ---			
Installation date: 19.09.2007		Module revision counter: 0			
Additional information: PNIO-Konfigurationstest					
Manufacturer information					
Manufacturer's description: SIEMENS AG		Serial number: S C-V2L457592007			

High-speed overview
Level of detail according to requirements
Standardized display

Agenda

Uniform
structures

Performance

Integration

Innovations

Enhancement

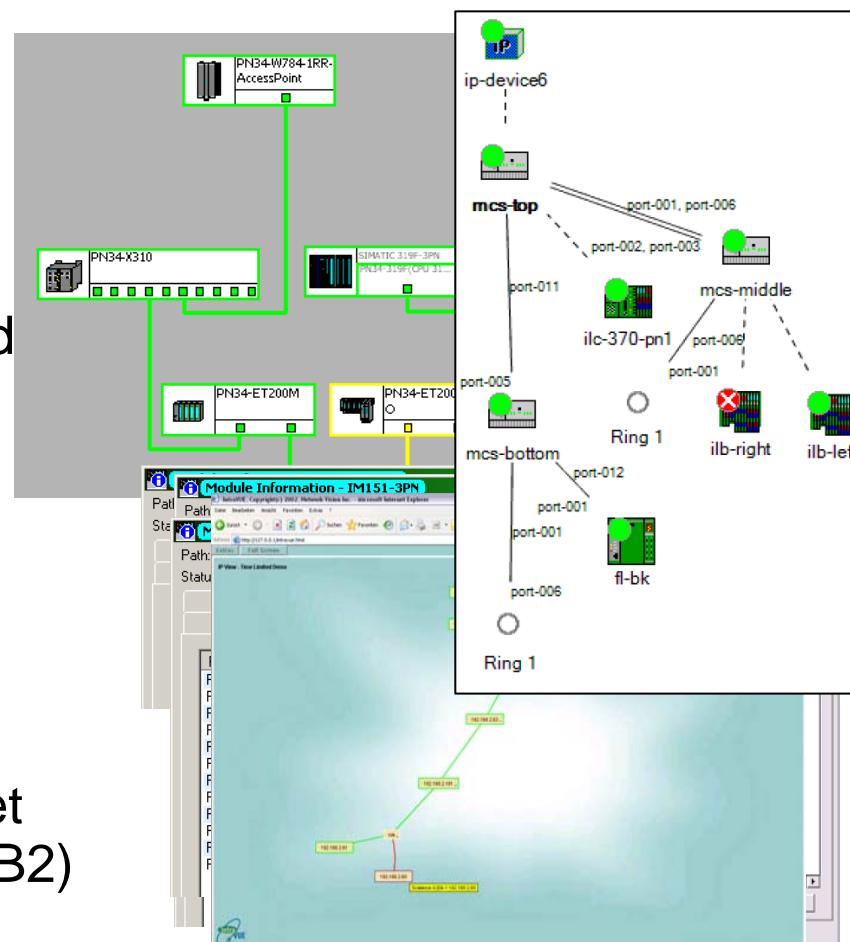
Cable diagnostics as for
device diagnostics

- Same modeling of Ports as
of I/O channels

Representation in standard
and topology view

Additionally with POF:
Maintenance
(plastic optical fiber)

Additionally:
Use of standard Ethernet
mechanisms (SNMP/MIB2)



Familiar engineering
Fast and location-related diagnostics
Use also by standard Ethernet diagnostics

Agenda

Uniform
structures

Performance

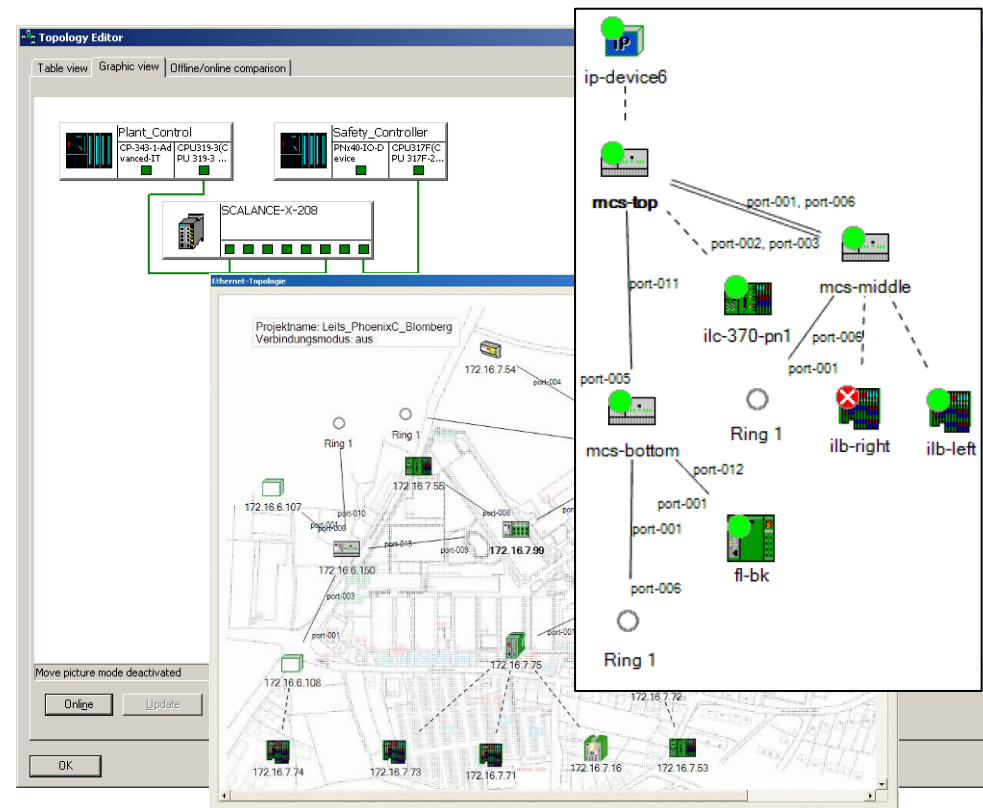
Integration

Innovations

Enhancement

Engineering view in addition to the actual plant structure

- graphical
 - tabular
 - offline
 - online
-
- integrated in
 - Engineering
 - Controller



Clear plant overview, documentation
Fast fault location
Fast access to detailed diagnostics

Agenda

Uniform
structures

Performance

Integration

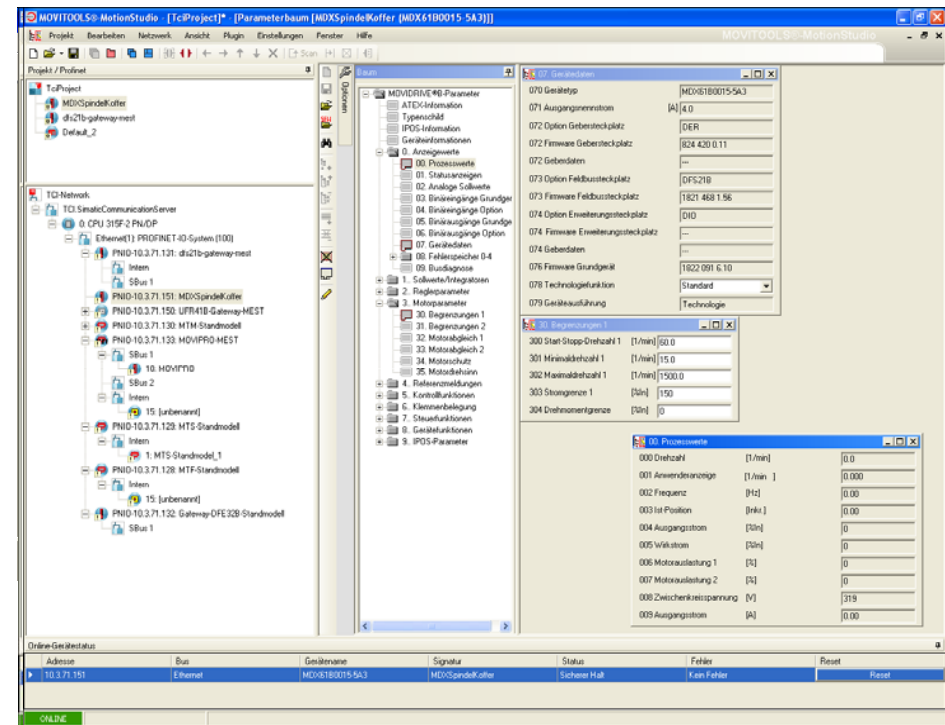
Innovations

Enhancement

Calling of vendor-specific device tools for complex devices

Simple user handling

- Automatic assignment of tool
→ associated device
- Use of the existing interface paths
- Standardized behavior of tools, e.g. for storage path
- Simple user handling



Fast, easy access to device tools
Vendor-specific diagnostics and parameter setting
Use of familiar tools

Presentation of diagnostics and parameter settings

Agenda

Uniform
structures

Performance

Integration

Innovations

Enhancement

Port	64	65-127	128-255	256-511	512-1023	1024-1518
1	75	16606584	68	8	4	-
2	-	-	-	-	-	-
3	-	-	-	-	-	-
4	-	5518402	30	6	-	-
5	-	5512938	13	4	-	-
6	-	5518048	12	3	-	-
7	153	4887	175	49	13	-
8	3	309	35	676	-	-
All	231	33161168	333	746	17	-

Simple access
Regardless of location, even wireless
No engineering

Agenda

Uniform
structures

Performance

Integration

Innovations

Enhancement

Control system for data acquisition



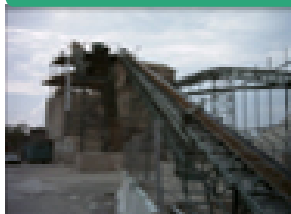
Encapsulated process



Gantry robot system



Gravel extraction



Water treatment



Brine extraction



Coil transport



Staircase production



Warehouse logistics



Agenda

Uniform
structures

Performance

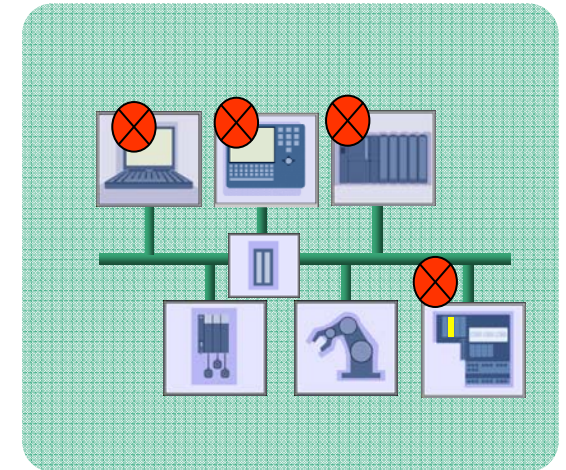
Integration

Innovations

Enhancement

Added value for our customers

- Fast engineering
- High plant availability
- Cuts costs of configuration and commissioning
- Diagnostic information worldwide
- Fast localization of faults
- Transparency in the network
- Automatic documentation
- Preventative maintenance
- Data available from anywhere

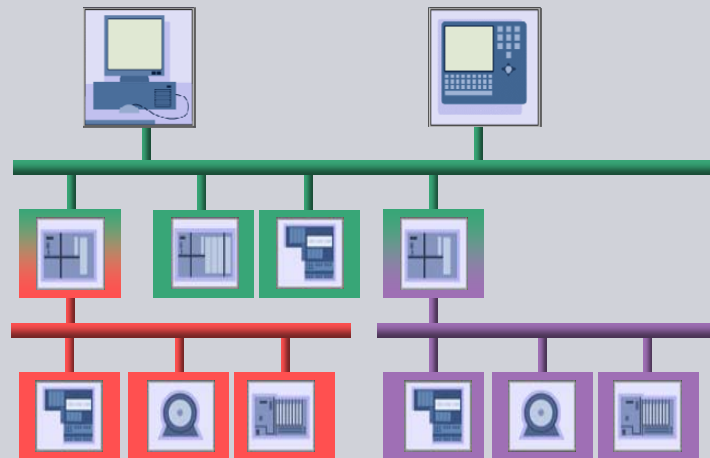


Summary

... Increase of efficiency by fast commissioning and increased plant availability

**PROFINET
offers ...**

**... seamless
integration of
existing
systems**



Such as
components,
fieldbuses and
networks

Requirements for setting up PROFINET

30

Agenda

Uniform
structures

Performance

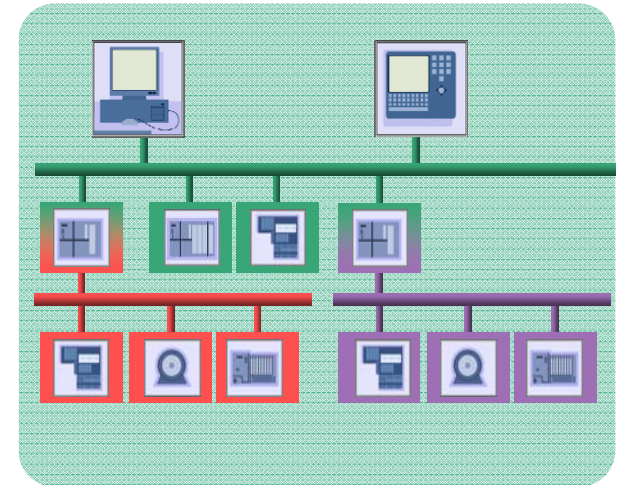
Integration

Innovations

Enhancement

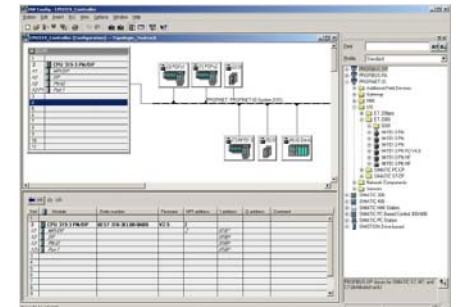
Do you want to...

- Easily integrate existing fieldbus systems?
- Integrate existing Ethernet networks?
- Continue using existing user programs?
- Continue using existing devices?



And ...

- Continue using your existing knowledge and tools without a problem?



Minimizes the time and expense of setting up your system with or migrating to PROFINET

Agenda

Uniform
structures

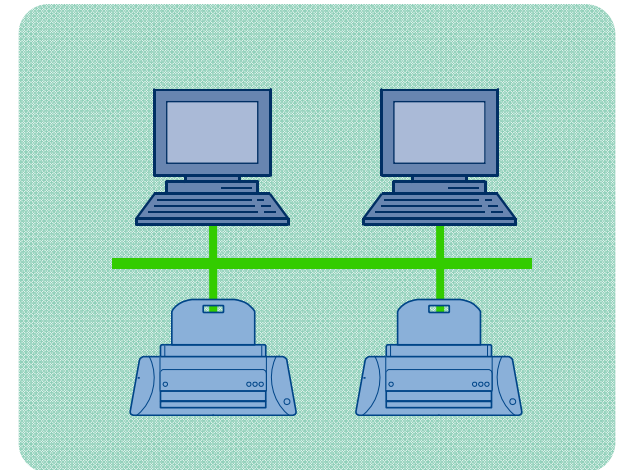
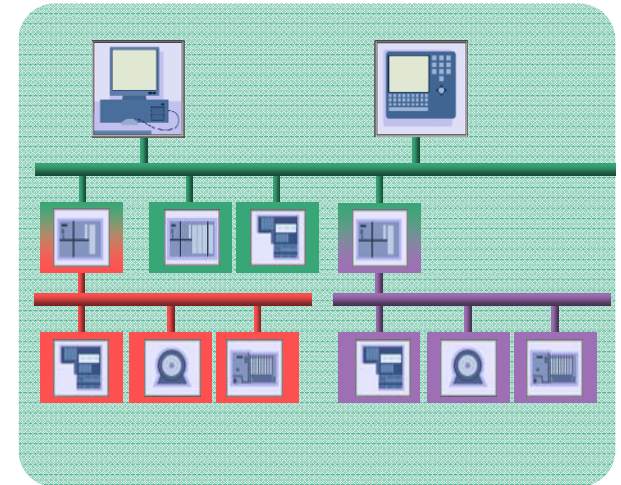
Performance

Integration

Innovations

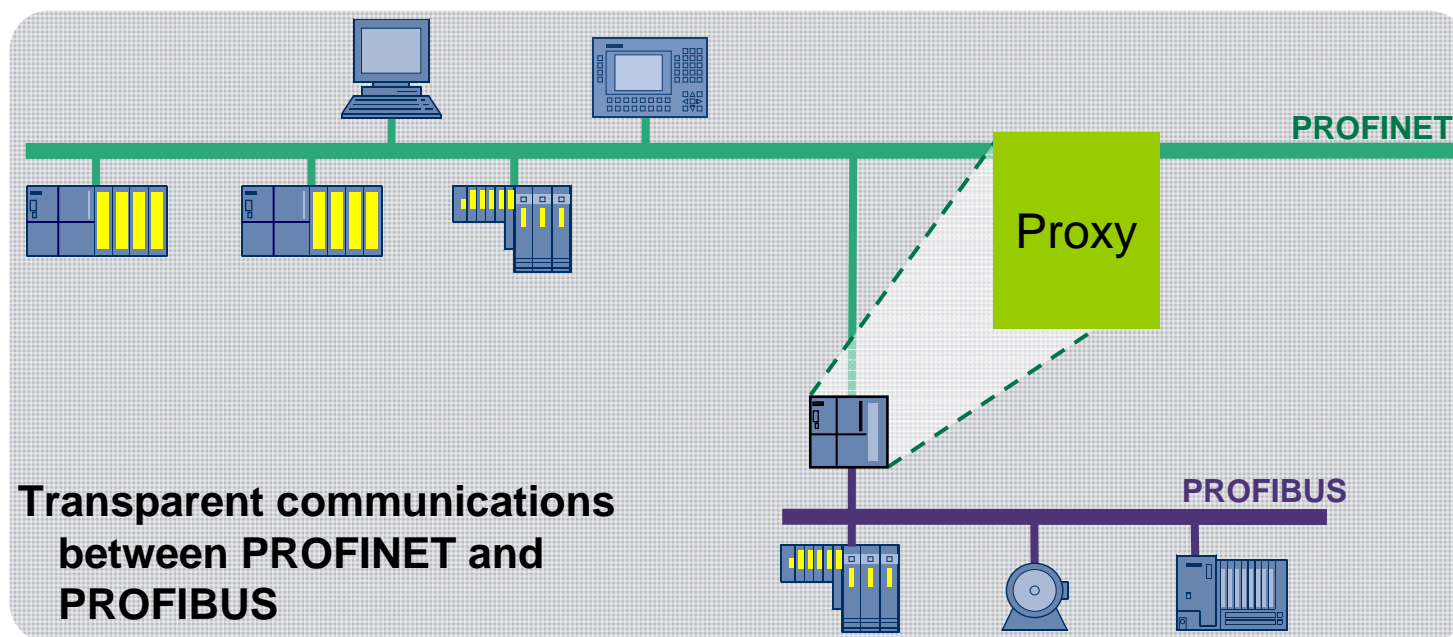
Enhancement

- Integration of existing fieldbus systems through proxy technology
- PROFINET is standard Ethernet
- Lets you continue using your user programs
- Makes it easy to convert existing devices
- Engineering – with the same look & feel



Benefits and added value for our customers

- Including gateways for PROFIBUS, Interbus, AS-Interface and other fieldbuses
- Including controllers with PROFINET and PROFIBUS interface

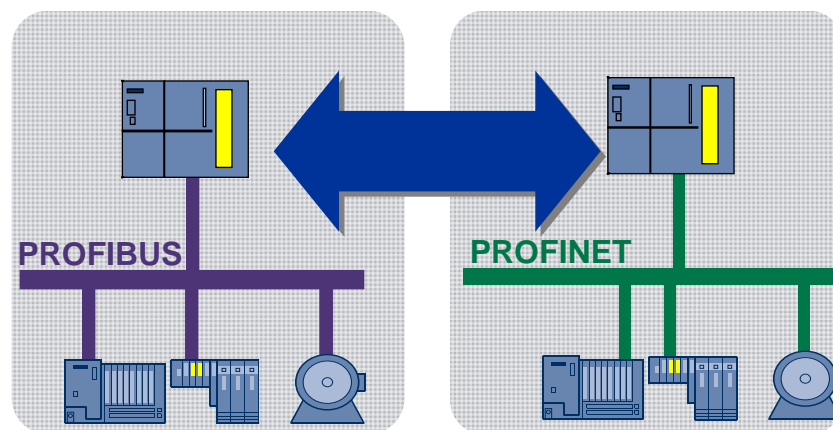
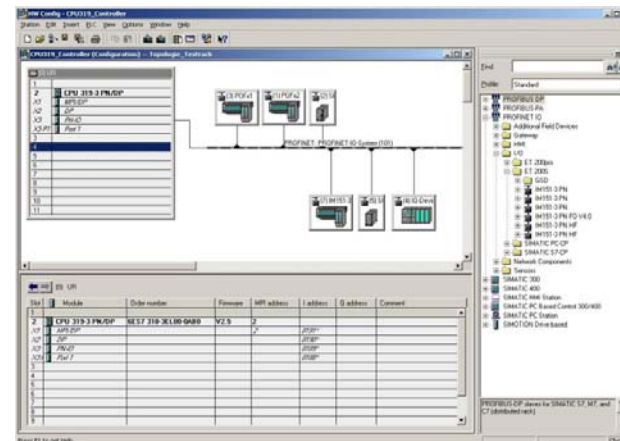


Protects your investment

Transparent integration without programming

Benefits and added value

- Just reconfigure your hardware...
- ... no reprogramming work necessary
- use the same exact tools with the same look & feel
- same system design for PROFIBUS and PROFINET



Reduce the time and expense of engineering and testing

Agenda

Uniform
structures

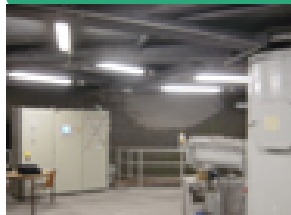
Performance

Integration

Innovations

Enhancement

Plaster production



Water treatment



Power management



Building automation



Brick production



Data compilation / Data control



Alarm management



Bio-Ethanol production



Agenda

Uniform
structures

Performance

Integration

Innovations

Enhancement

Reuse of existing devices with EtherCAT

- EtherCAT function is integrated into the bus connection and in the I/O modules
- It may be true that existing “K-Bus” I/O modules can be hooked up to a EtherCAT bus connection but...
→ doing so has negative influence on performance

Ethernet/IP: connecting existing fieldbuses

- Only systems with CIP application interfaces can be integrated (DeviceNet, ControlNet)
- PROFINET can also integrate DeviceNet through a proxy, as well as:
 - AS-Interface and Modbus TCP
 - and the leading fieldbuses PROFIBUS, Interbus

**PROFINET, the comprehensive and leading standard,
also for fieldbus integration and migration**

Advantages to using PROFINET

36

Agenda

Uniform
structures

Performance

Integration

Innovations

Enhancement

Protects your investment

- Seamless integration of existing fieldbuses
- Easy conversion of existing devices
- No additional tools or training needed

Saves costs

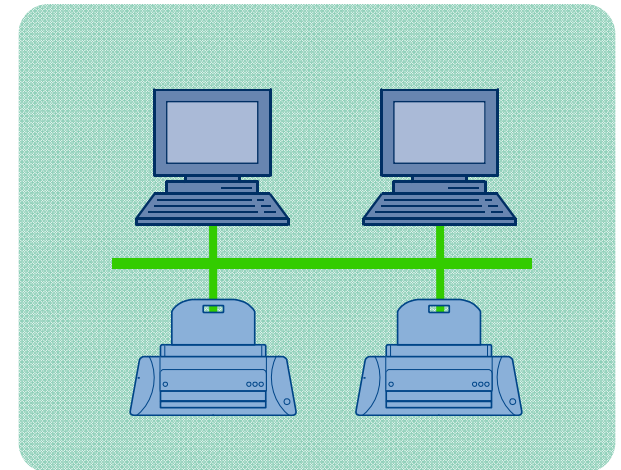
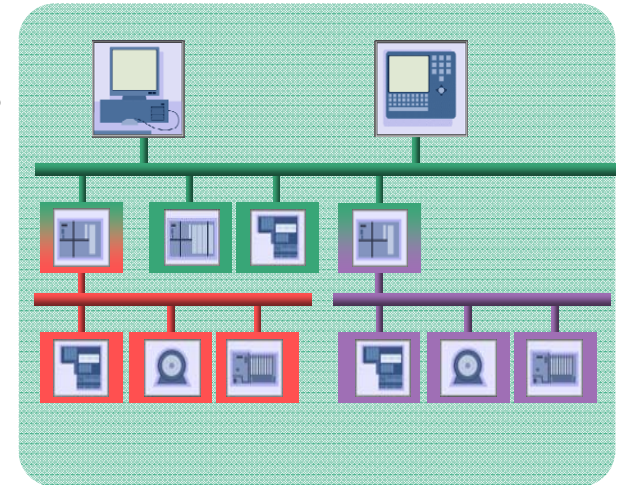
- Uses existing Ethernet networks

Uniformity

- Uniform physical network concept

Saves time

- Reduces engineering and testing time
- Cuts time needed for migration

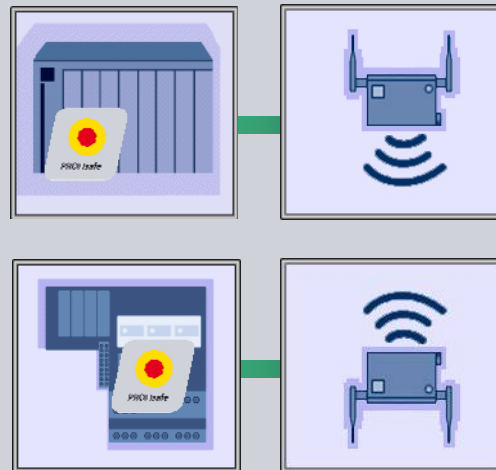


Summary

Minimizes the time and expense of setting up your system with or migrating to PROFINET.

**PROFINET
offers ...**

**... new,
innovative
applications**



With wireless
automation

Does this sound familiar?

38

Agenda

Uniform
structures

Performance

Integration

Innovations

Enhancement

Your constraints...

- Expensive slip rings or slip conductors
- Low flexibility & limited space
- High maintenance costs



Your needs...

- An easy networking solution even for hard-to-reach places
- More space & greater flexibility
- Less maintenance costs



Spring the boundaries, increase flexibility!

39

Agenda

Uniform
structures

Performance

Integration

Innovations

Enhancement

You also want to ...

- Increase availability and boost productivity
- Integrate mobile clients
- Guarantee easy expandability

But need to have ...

- Standardized wireless technology
- No restrictions compared to normal cabling (safety, security)



The answer is: Industrial Wireless LAN with PROFINET

Agenda

Uniform
structures

Performance

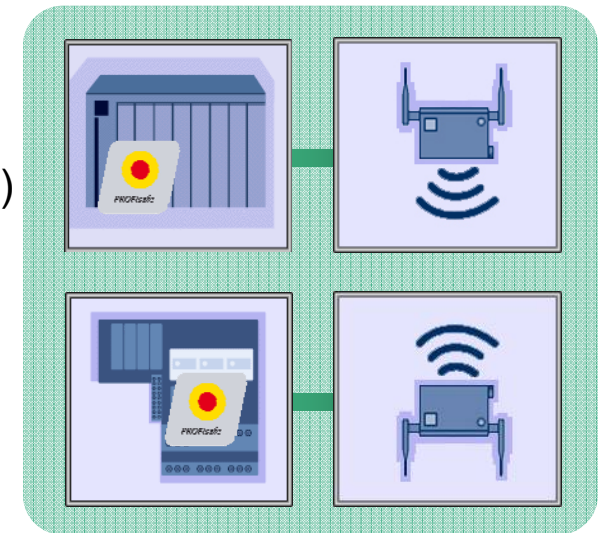
Integration

Innovations

Enhancement

PROFINET via WLAN with ...

- Standardized technology
 - Easy engineering
(planning, set-up, operation, documentation)
 - Network security
 - Failsafe communications
("Safety Integrated")
 - Mobile HMI
-
- ...as reliable, rugged, safe and secure as
hard-wired systems!



Agenda

Uniform
structures

Performance

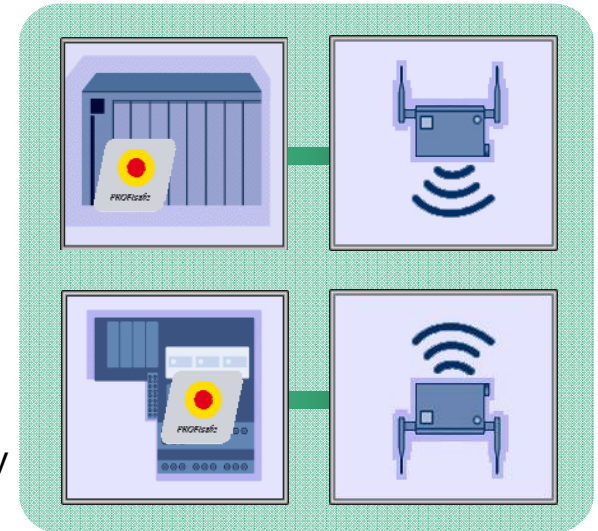
Integration

Innovations

Enhancement

PROFINET based on standard Ethernet

- Wireless communications in compliance with IEEE standard possible
- Industrial WLAN (IEEE 802.11)
 - cyclic and acyclic data transmission
 - Supervision of wireless connection
 - Redundant wireless operation over 2 separate wave bands for raised availability
 - PROFIsafe over WLAN
- Bluetooth (IEEE 802.15.2)
 - Coexistence with WLAN
- Fast commissioning
- Easy diagnostics



Using established standards for innovative applications

Agenda

Uniform
structures

Performance

Integration

Innovations

Enhancement

Plaster production



Machine tools



Coil transport



Transshipment



Staircase production



Warehouse logistics



Brick production



Warehousing



Cement industry



Agenda

Uniform
structures

Performance

Integration

Innovations

Enhancement

Cement transport



High-bay warehouse



Transport & logistics



Body shop



Mobile fastening controller



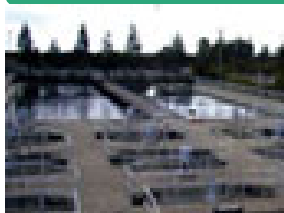
Overhead monorail conveyor



Gantry robot system



Water treatment



Air freight



Agenda

Uniform
structures

Performance

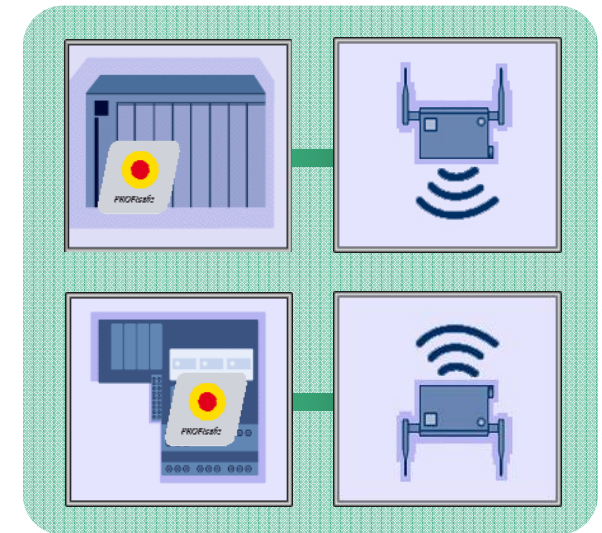
Integration

Innovations

Enhancement

Only with PROFINET...

- Take advantage of all standard Ethernet have to offer
- Failsafe and standard communications over one medium and also via Industrial WLAN



PROFINET – the first open Ethernet standard with wireless, failsafe communications!
Perfect interaction between network components and automation devices from one source!

Agenda

Uniform
structures

Performance

Integration

Innovations

Enhancement

...Higher productivity based on

- Increased plant availability compared to mechanical solutions (e.g. trailing cables)

...Lower costs thanks to

- Less maintenance & installation work
- Use of standard components even for failsafe communications

...Greater flexibility and mobility

- Communications from any location
- Easy expandability and modification
- Independence from mechanical bounds



Summary

...greater flexibility and mobility

**PROFINET
offers ...**

**... new,
innovative
applications**



PROFIsafe

With integrated
safety

Agenda

Uniform
structures

Performance

Integration

Innovations

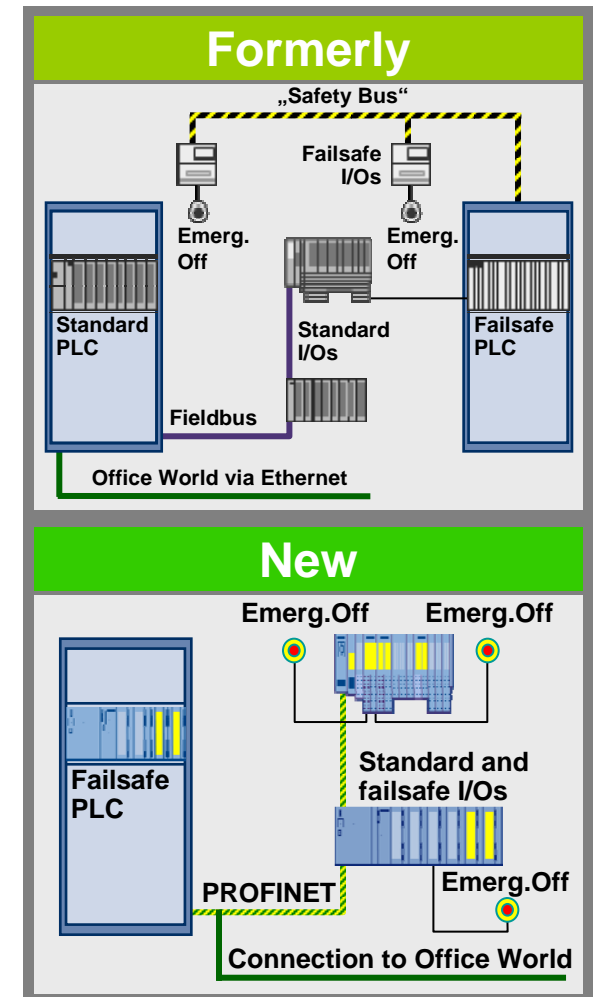
Enhancement

One bus for standard and failsafe automation

- Meets the highest safety categories
- Safety Integrity Level 3 / PL e / Cat. 4
- Uniform diagnostics and uniform user interface
- Reduce the number of types, parts and interfaces

**Save time, space and money
with Safety Integrated!**

PROFINET Marketing - Benefits

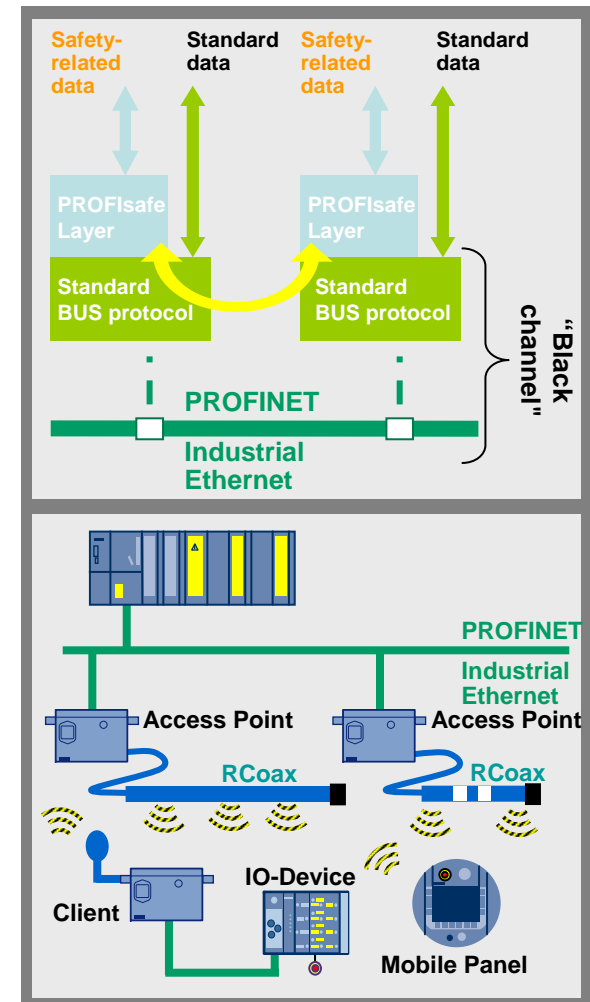


Use of the PROFI-safe profile

- Tested and accepted with PROFINET
- Standard and failsafe communications over the same transmission path
- Can be used for stationary and mobile Emergency Stop function
- Allows the use of extended safety functions by use of dedicated PROFI-safe devices

Even wireless...

Failsafe and available, just like hard-wired!



Agenda

Uniform
structures

Performance

Integration



Innovations

Enhancement

Safety solutions conforming of standards

49



- Using PROFIsafe and PROFINET can satisfy all requirements when it comes to ensuring complete safety for humans, equipment, and the environment.
- First communications standard developed in accordance with safety standard IEC 61508
- Developed to IEC 61784-3-3, PROFIsafe is the international standard
- PROFIsafe handles potential faults (e.g. invalid addresses, delays, data loss) by means of
 - Serial numbering
 - Time monitoring
 - Authenticity monitoring
 - Additional CRC backup
- Evaluated by  BGIA and 
- Drive technology also fits in seamlessly here with the integrated safety functions according to IEC 61800-5-2.

Agenda

Uniform
structures

Performance

Integration

Innovations

Enhancement

■ The basic safety functions ...

- „Safe Torque Off ”
- „Safe Stop 1”
- „Safe Brake Control“
- ... always leads to a **safe disconnection** of the energy feed to the motor when selected, e.g., in a hazard situation.



■ The advanced safety functions ...

- „Safe Operating Stop“
- „Safe Stop 2“
- „Safety-Limited Speed“
- „Safe Speed Monitor“
- ... allow **reliable monitoring** of the drive during operation or when a temporary exceptional situation, such as setup or maintenance work, occurs. .

- It is possible to carry out maintenance work conveniently and safely, which significantly reduces machine and equipment downtimes.

Agenda

Uniform
structures

Performance

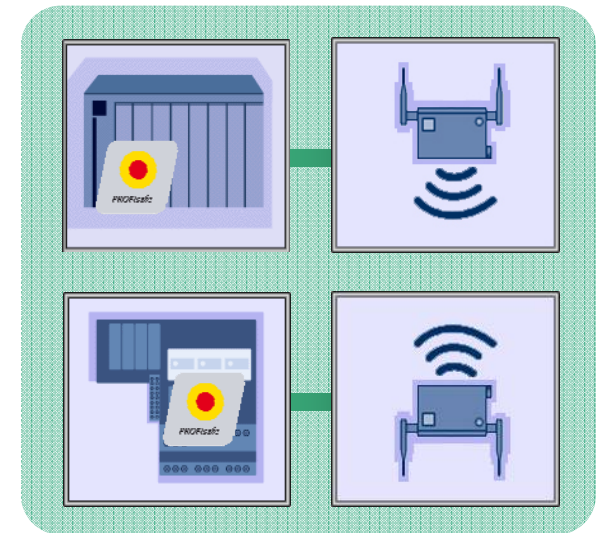
Integration

Innovations

Enhancement

Only with PROFINET...

- Wireless available
- Benchmark for the safety communication in the IEC standards
- Established as open standard
- 10 years experience
- More as 100 000 plants in many branches:
 - Factory
 - Process
 - Train
 - Cable car
 - Fun rides
 - Nuclear
 -



PROFIsafe, the proven and established market leader

Agenda

Uniform
structures

Performance

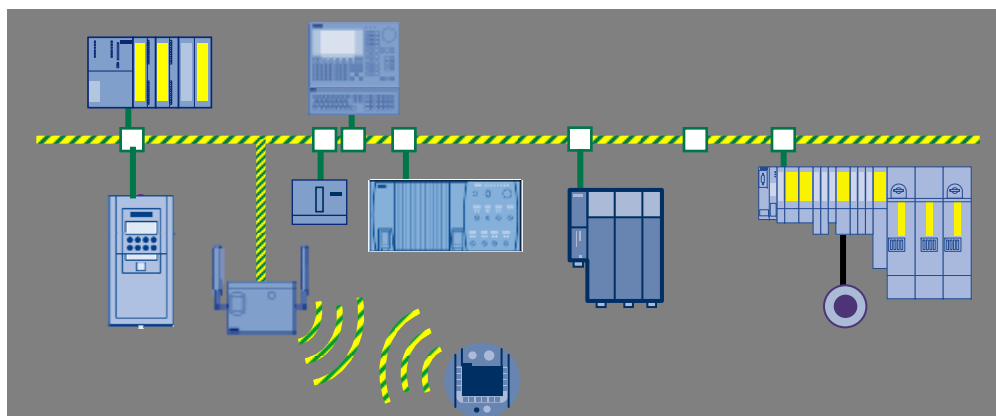
Integration

Innovations

Enhancement

Safety for humans and machines

- Safety and standard data over one connection, within one station
- PROFI-safe via PROFIBUS and PROFINET



Summary

Save space, time and money with PROFI-safe

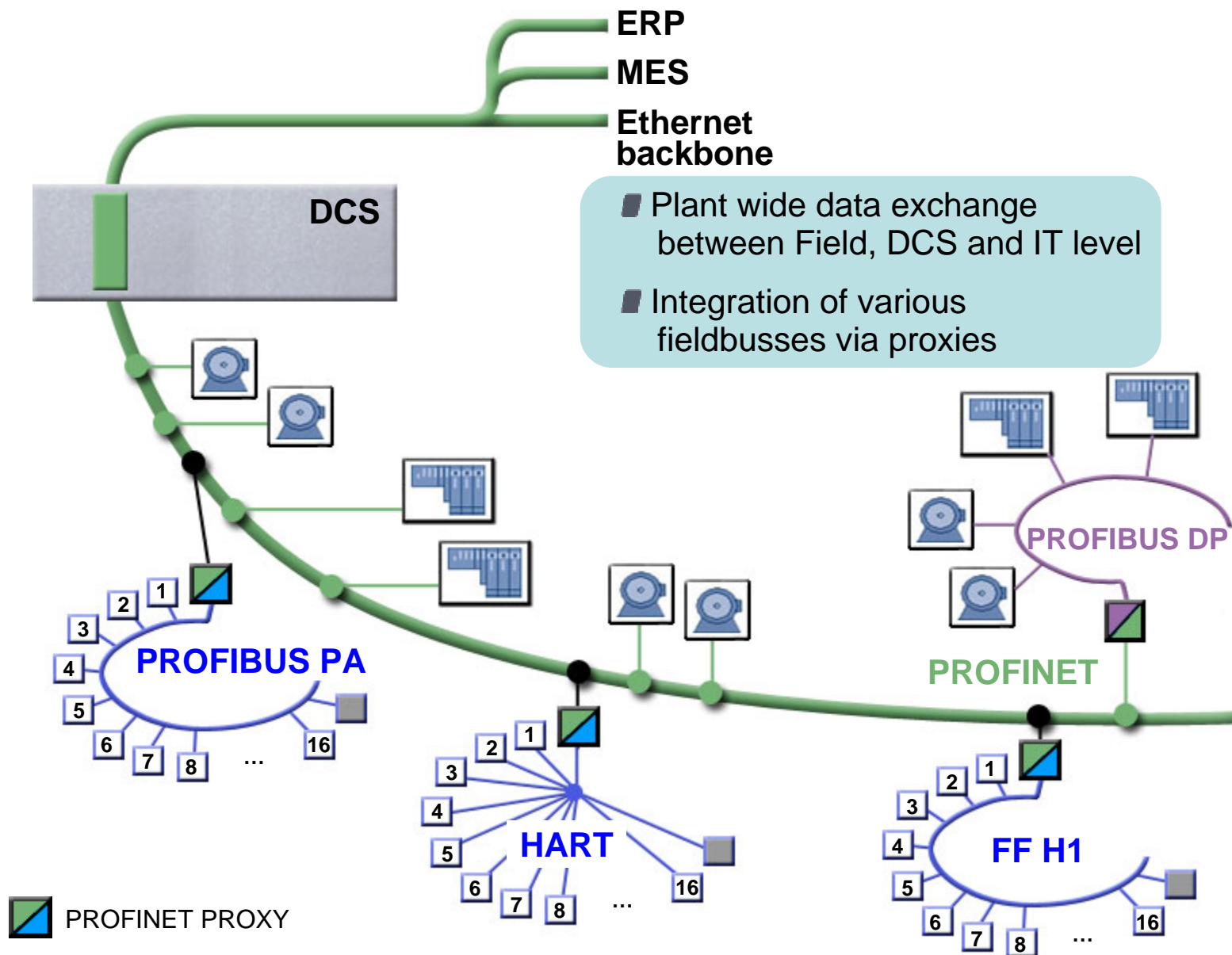
**PROFINET
offers ...**

**... continuous
enhancement**



Process
industries

Agenda
Uniform
structures
Performance
Integration
Innovations
Enhancement



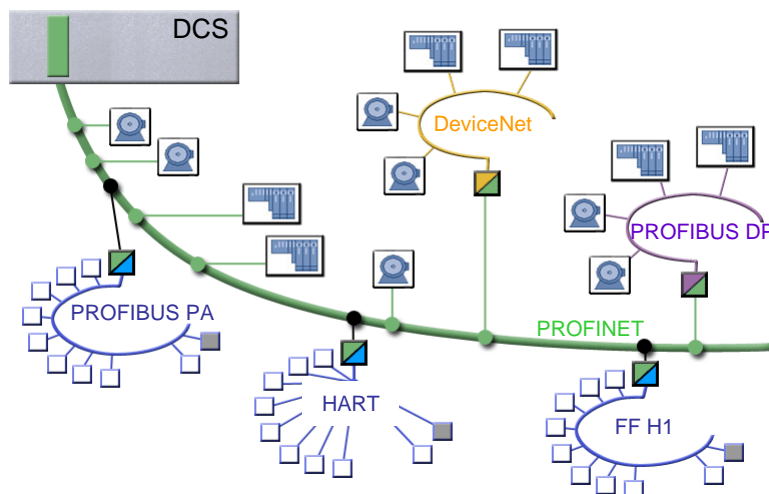
Key Functions for Process Automation

55

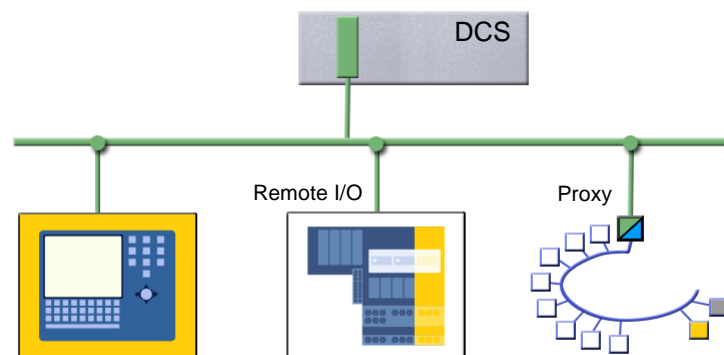
Agenda

- Uniform structures
- Performance
- Integration
- Innovations
- Enhancement

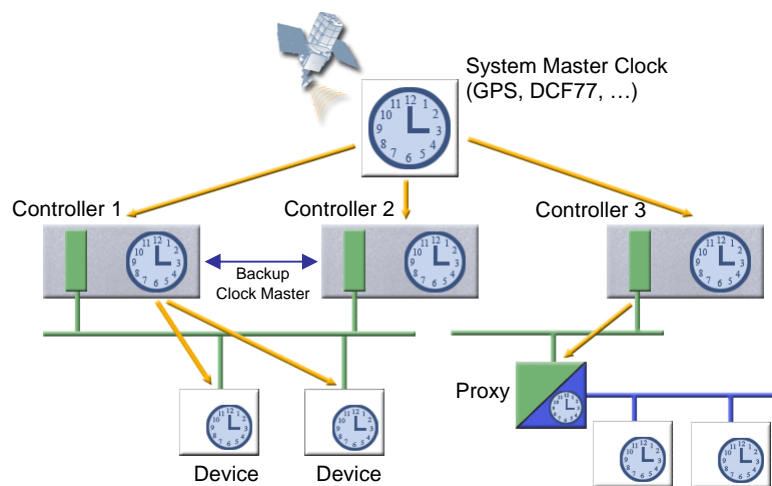
Fieldbus integration



Configuration in Run (CiR)

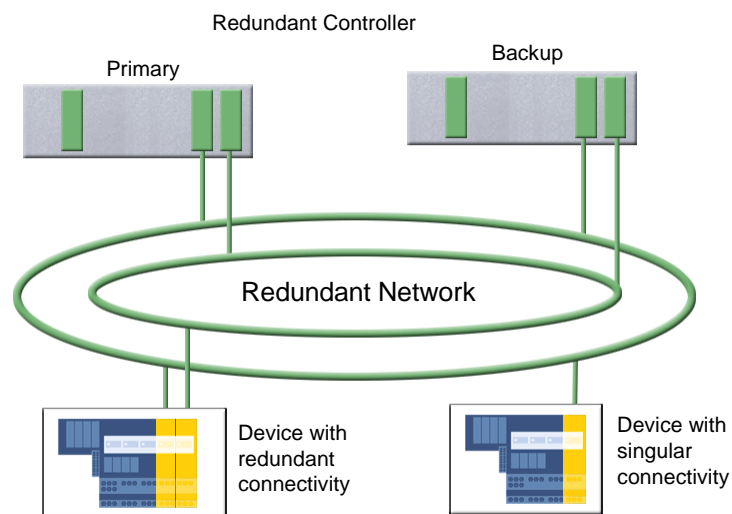


Time sync / time stamping



PROFINET Marketing - Benefits

Scalable Redundancy



**PROFINET
offers ...**

**... continuous
enhancement**



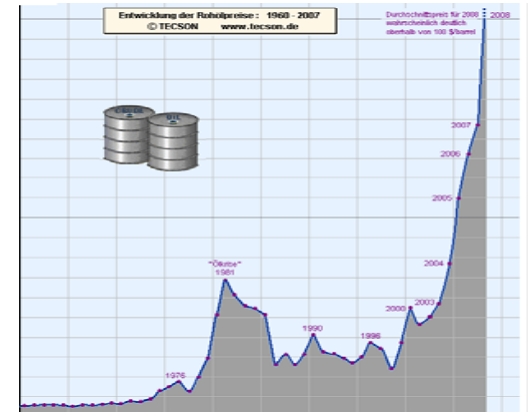
PROFenergy

What's in for me?

57

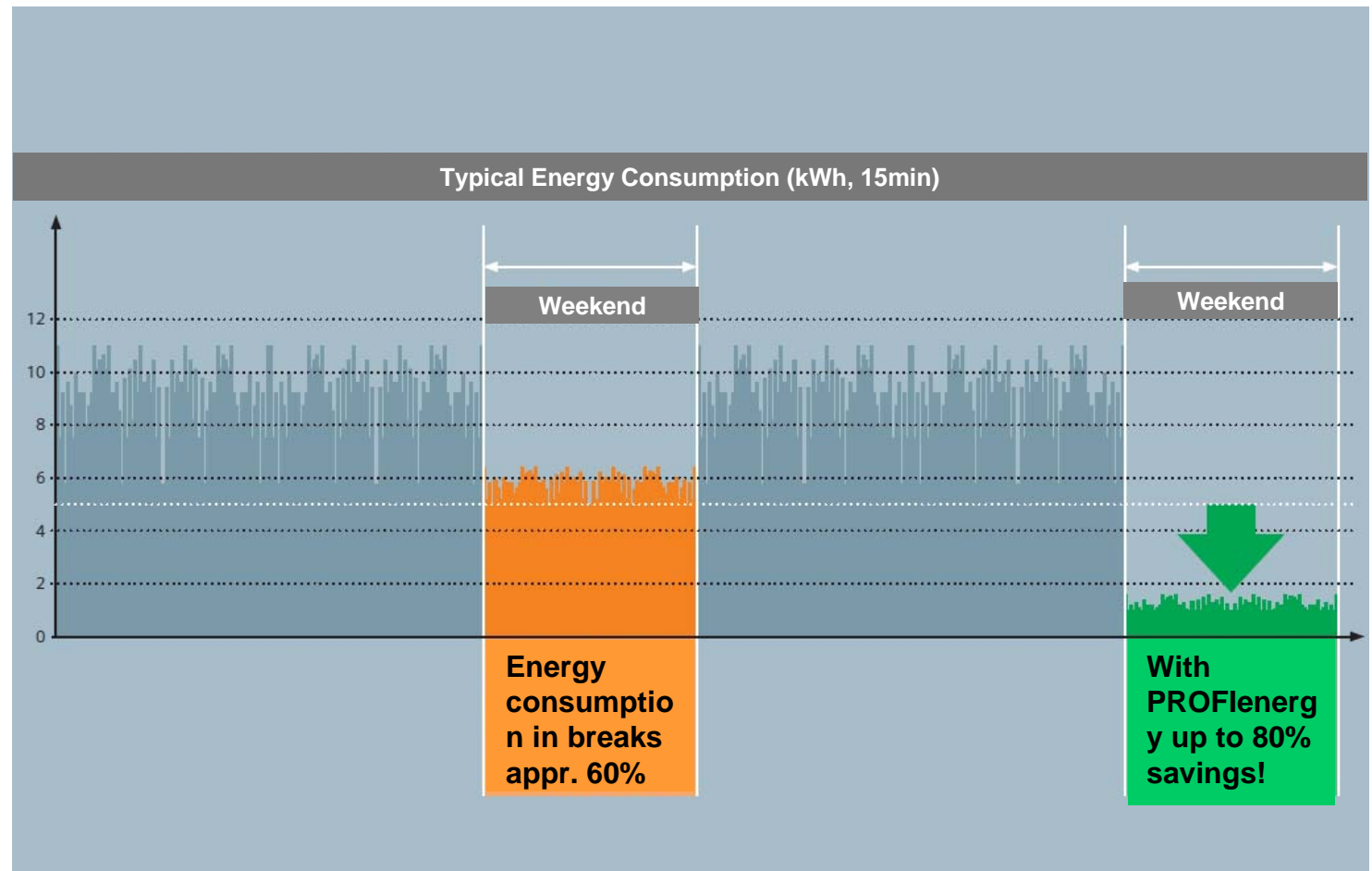
Agenda
Uniform
structures
Performance
Integration
Innovations
Enhancement

- PROFINET is the first field bus worldwide with a standardized profile for efficient energy management.
- PROFINET is a synonym for innovation. Requirements from customer side are taken seriously and implemented very fast.
- PROFlenergy generates additional value to your products and safes your business in the long term.



Use PROFlenergy, to save energy and costs!

- Agenda
- Uniform structures
- Performance
- Integration
- Innovations
- Enhancement

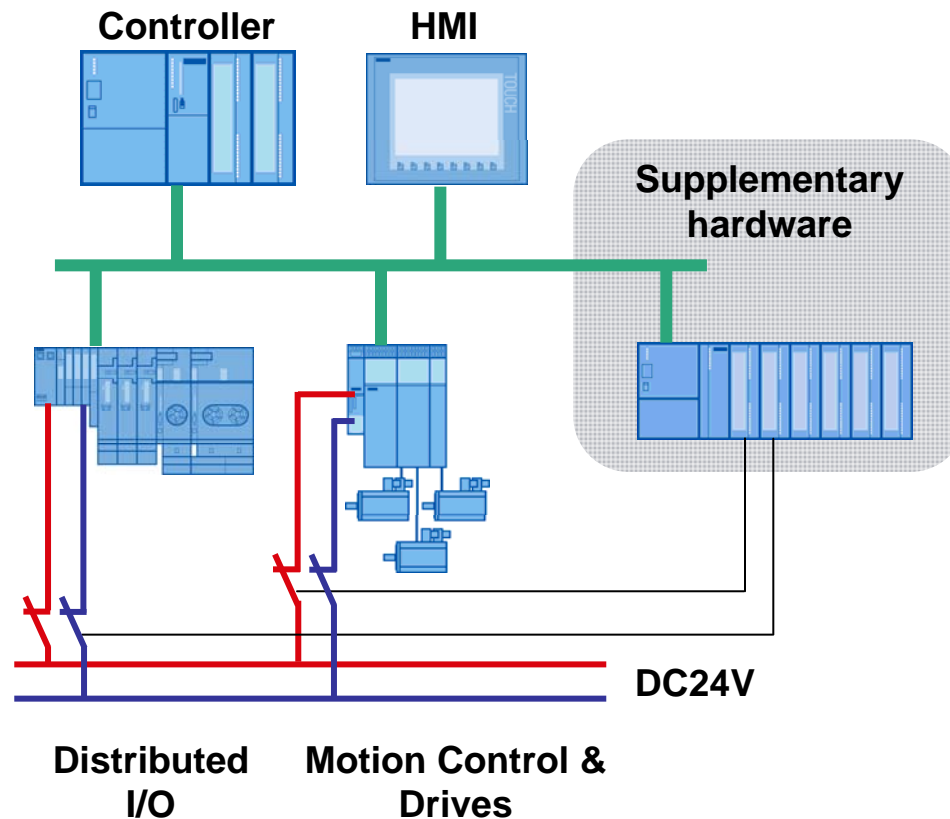


Energy consumption during breaks appr. 60%!

Weaknesses of current solutions

59

Agenda
Uniform
structures
Performance
Integration
Innovations
Enhancement



Manual switching:

- Time-consuming
- Start-up unreliable
- Frequently only one main switch

Use of external hardware

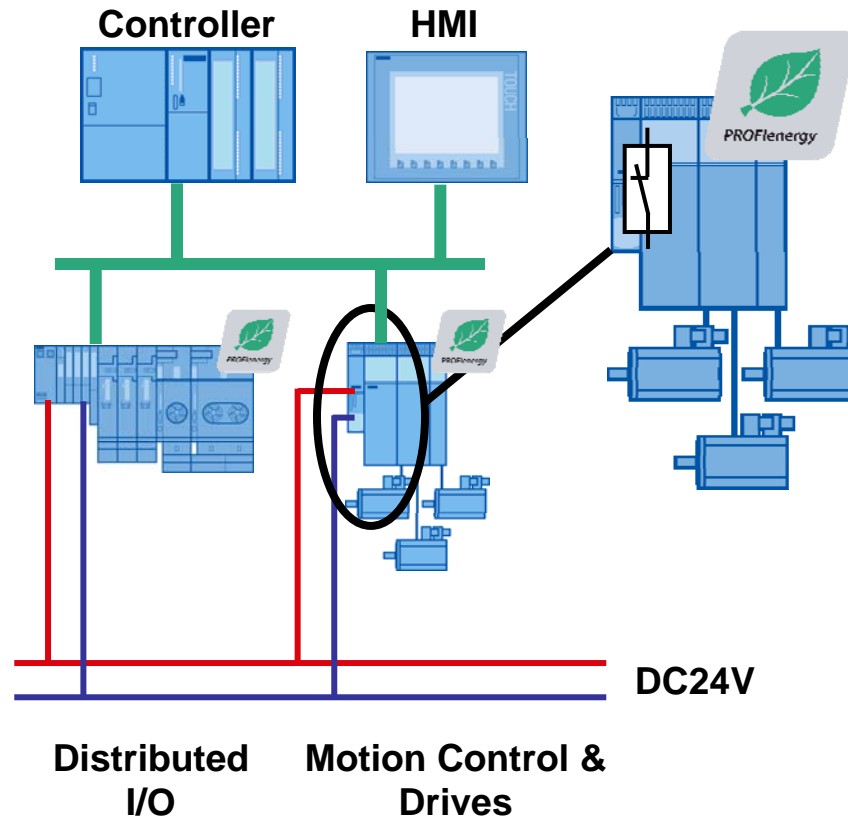
- Requires space and money
- Engineering and maintenance required
- Individual program

**Discrete solutions are rarely accepted.
Saving potential during the breaks is not used.**

Five good reasons for PROFlenergy

60

Agenda
Uniform
structures
Performance
Integration
Innovations
Enhancement



Cost savings through omission of external hardware

Energy saving even in short pauses thanks to granular switching

High system reliability through coordinated switching

Investment safeguarding through simple reaction-free integration into existing standards

Free selection of device through vendor-independent standard

PROFlenergy permits energy saving in breaks through switching-off of non-required loads!

Agenda

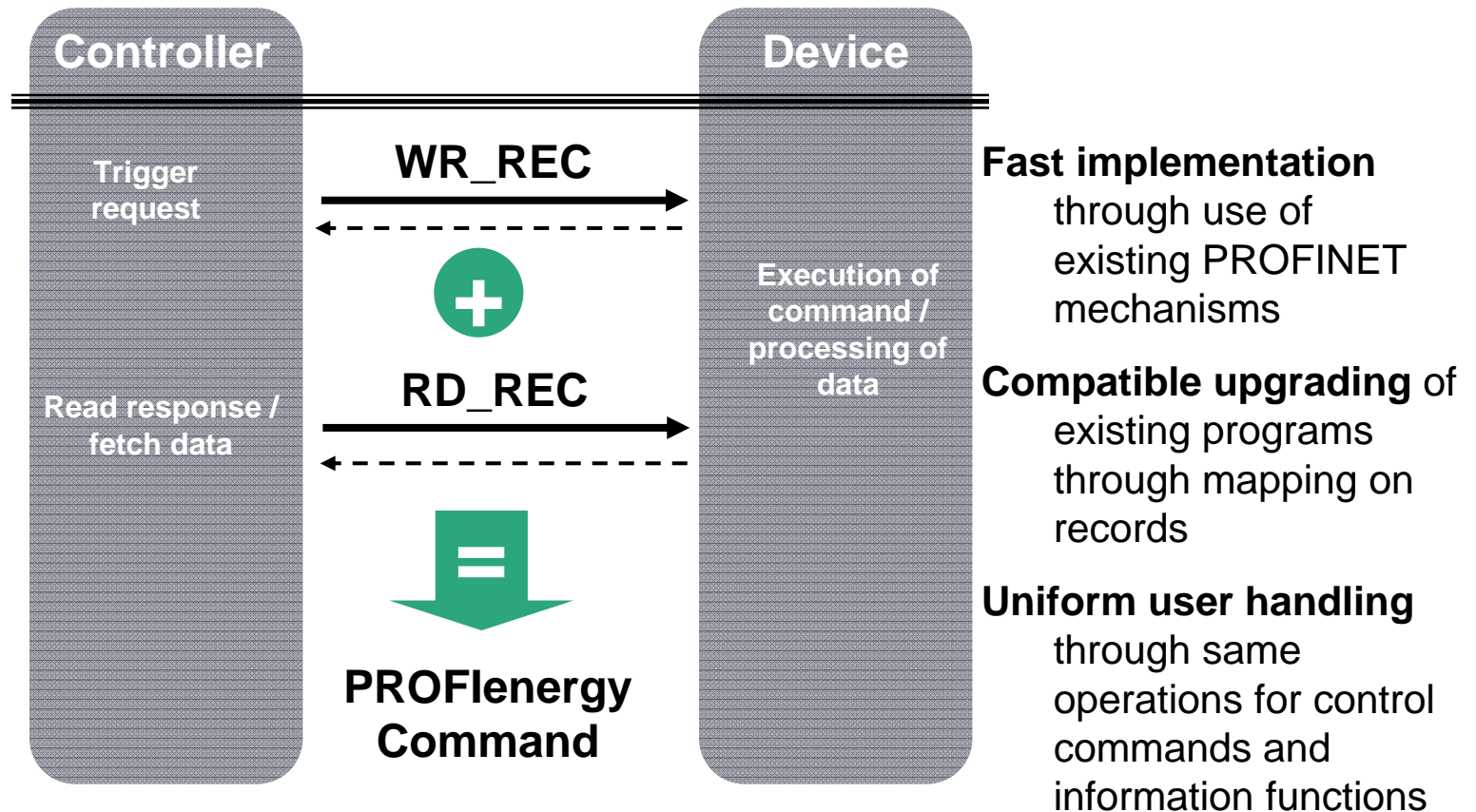
Uniform
structures

Performance

Integration

Innovations

Enhancement



System and device vendors offer corresponding blocks which conceal the protocol.

Agenda

Uniform
structures

Performance

Integration

Innovations

Enhancement



Competitive advantage ...
... through marketing of low-energy machines



Investment safeguarding ...
... through simple expansion of existing programs



Low programming requirements ...
... through reloadable function blocks



Fast commencement ...
... through integration into known product families and use of existing mechanisms



Free choice of manufacturer and devices ...
... through manufacturer independent standard



Environmental protection ...
... through lowering energy consumption and CO2 emissions

More information

Agenda
Uniform
structures
Performance
Integration
Innovations
Enhancement

Internet

- www.sea.profinet.com

Flyer

- PROFINET Flyer
- PROFINET System description



Support

- local PROFINET-Competence Center

PI – PROFIBUS/PROFINET International

Bernd Lieberth

Secretary of the regional PROFIBUS/PROFINET Association South East Asia

1, Scotts road, #21-07, Shaw Centre, Singapore-228208

Office: +65 6490 6464

Mobile: +65 9150 2977

E-Mail: southeastasia@profibus.com

Summary

Agenda

Uniform
structures

Performance

Integration

Innovations

Enhancement

PROFINET offers ...

... more continuity and uniform structures

... more nodes and better performance

... seamless integration of existing systems

... new, innovative applications

... continuous enhancements

What is PROFINET?

67

Agenda

Uniform
structures
Performance
Integration
Innovations
Enhancement



- The fieldbus based on Ethernet for all applications
- Covers the key markets and key technologies in automation – both today and in the future
- Supported by the greatest automation organization for communication solutions

Thank you for your attention!

68



- PROFIBUS Association South East Asia
- Bernd Lieberth (Secretary)
- 1, Scotts road, #21-07, Shaw Centre
- Singapore-228208
- E-Mail: southeastasia@profibus.com
- E-Mail: Bernd.Lieberth@siemens.com

Join us at 